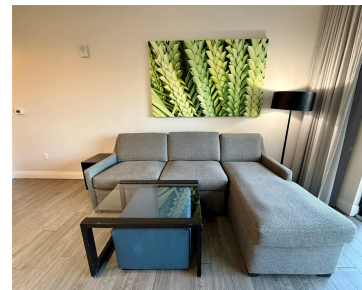
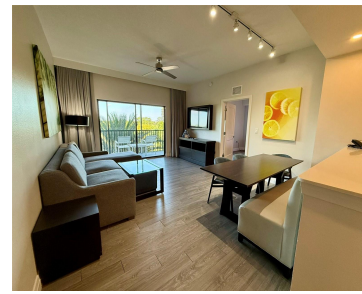


14501 GROVE RESORT AVE WINTER GARDEN FL 34787

<https://candiscarmichael.com>



Invest where others vacation. This beautifully furnished 2-bedroom, 2-bathroom condo at The Grove Resort & Water Park Orlando offers the perfect blend of personal enjoyment and income potential. The property participates in the resort's professionally managed income program, allowing for a seamless, hands-off experience. Enjoy exclusive access to the water park and a prime location [...]

- 2 beds
- 2 baths
- Residential
- Condo - Hotel
- Active
- 1265 sq ft



Courtesy of

Listing Office: LPT REALTY, LLC

Status: Active

Office ID: MFR261016803

MLS ID: MFRO6401424



Call us now

Phone: 727-888-3292

Email: RealtorCandis@gmail.com



Charles Rutenberg Realty, Inc.
THE STANDARD OF EXCELLENCE

Description

Virtual Tour: <https://www.propertypanorama.com/instaview/stellar/O6401424>

Basics

Bathrooms Full: 2

Date added: Added 3 hours ago

Category: Condo - Hotel

Type: Residential

Bedrooms: 2 beds

Bathrooms: 2 baths

Half baths: 0 half baths

Floors: 7 floors

Area, sq ft: 1265 sq ft

Lot size, sq ft: 1414 sq ft

Year built: 2025

SubdivisionName: GROVE RESORT AND SPA HOTEL
CONDO 1

ListOfficeName: LPT REALTY, LLC **ListAOR:** mfrmls

Location Details

Township: 24

Road Surface Type: Paved

Elementary School: Water Spring Elementary **Middle Or Junior School:** Water Spring Middle

High School: Horizon High School

Property Features



Call us now

Phone: 727-888-3292

Email: RealtorCandis@gmail.com



Charles Rutenberg Realty, Inc.
THE STANDARD OF EXCELLENCE

Interior Features: Ceiling Fans(s), Elevator

Flooring: Carpet, Ceramic Tile

Pets Allowed: Yes

Roof: Shingle

Water Source: Public

Cooling: Central Air

Furnished: Furnished

Appliances: Dishwasher, Disposal, Dryer, Microwave, Range, Refrigerator, Washer

Laundry Features: Laundry Closet

Exterior Features: Lighting, Sidewalk

Utilities: BB/HS Internet Available, Cable Connected, Electricity Connected, Sewer Connected, Water Connected

Sewer: Public Sewer

Heating: Central

Property Details

Subdivision Name: GROVE RESORT AND SPA HOTEL CONDO 1

Levels: Three Or More

Foundation Details: Slab

Listing Terms: Cash, Conventional, VA Loan

Parcel Number: 31-24-27-3000-24-130

Direction Faces: North

Construction Materials: Block

Association Information

Association YN: Yes

Association Fee Frequency: Monthly

Association Fee: 905.09

Community Features: Clubhouse, Fitness Center, Pool

Fees&Taxes

Tax Year: 2025

Tax Legal Description: GROVE RESORT AND SPA HOTEL CONDOMINIUM 2 20190396158 UNIT 2413

Tax Annual Amount:
\$7,772

Tax Lot: 130



Call us now

Phone: 727-888-3292

Email: RealtorCandis@gmail.com



Charles Rutenberg Realty, Inc.
THE STANDARD OF EXCELLENCE

Rooms

Room type	Level
Primary Bedroom	First
Bedroom 2	First
Primary Bathroom	First
Bathroom 2	First
Kitchen	First
Living Room	First

Amenities & Features

Waterfront available: No

AttachedGarageYN: No

PoolPrivateYN: No

CommunityFeatures: Clubhouse, Fitness Center, Pool

Utilities: BB/HS Internet Available, Cable Connected, Electricity Connected, Sewer Connected, Water Connected

Amenities: Dishwasher, Disposal, Dryer, Microwave, Range, Refrigerator, Washer

GarageYN: No

FireplaceYN: No

Cooling: Central Air

ExteriorFeatures: Lighting, Sidewalk

Features: Ceiling Fans(s), Elevator

Building Details



Call us now

Phone: 727-888-3292

Email: RealtorCandis@gmail.com



Charles Rutenberg Realty, Inc.
THE STANDARD OF EXCELLENCE

NewConstructionYN: No

Exterior material: Block

Heating: Central

Roof: Shingle

Miscellaneous

Ownership: Fee Simple

Occupant Type:
Vacant

Showing Requirements: 24 Hour Notice, Appointment Only, Call Before Showing, Call Listing Agent



Call us now

Phone: 727-888-3292

Email: RealtorCandis@gmail.com



Charles Rutenberg Realty, Inc.
THE STANDARD OF EXCELLENCE