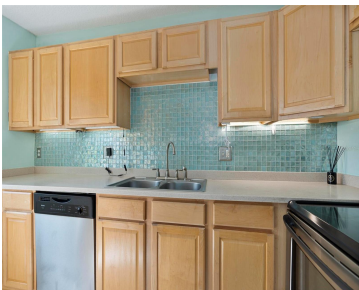


131 114TH TERRACE ST PETERSBURG FL 33716

https://candiscarmichael.com



Nestled in one of the most convenient locations in Tampa Bay, this beautifully designed townhome-style condo offers all the comforts you’re looking for, plus a low-maintenance lifestyle. No water intrusion during last hurricane season’s two major storms. Step inside to find a spacious floor plan, complete with a large private screened-in patio—perfect for morning coffee, [...]

- 2 beds
- 2 baths
- Residential
- Townhouse
- Active
- 990 sq ft



Courtesy of

Listing Office: COLDWELL BANKER REALTY
Status: Active

Office ID: MFR260000670
MLS ID: MFRTB8317589

Description



Call us now
Phone: 727-888-3292
Email: RealtorCandis@gmail.com



Virtual Tour:

<https://www.homes.com/property/131-114th-terrace-ne-st-petersburg-fl-unit-131/6660nhd920kp2/?tab=1&dk=dff9401gjr771>

Basics

Unit Number: 131

Bathrooms Half: 1

Category: Townhouse

Bedrooms: 2 beds

Half baths: 1 half bath

Area, sq ft: 990 sq ft

Year built: 1979

SubdivisionName: WINDWARD POINTE ST
PETERSBURG

ListAOR: mfrmls

Bathrooms Full: 1

Date added: Added 2 months ago

Type: Residential

Bathrooms: 2 baths

Floors: 2 floors

Lot size, sq ft: 0 sq ft

UnitNumber: 131

ListOfficeName: COLDWELL BANKER
REALTY

Location Details

Township: 30

Road Surface Type: Asphalt

Property Features



Call us now

Phone: 727-888-3292

Email: RealtorCandis@gmail.com



Charles Rutenberg Realty, Inc.
THE STANDARD OF EXCELLENCE

Interior Features: Ceiling Fans(s), Living Room/Dining Room Combo, Primary Bedroom Upstairs, Solid Surface Counters

Flooring: Carpet, Laminate, Tile

Carport YN: Yes

Pets Allowed: Cats OK, Number Limit, Yes

Roof: Shingle

Water Source: Public

Cooling: Central Air

Appliances: Dishwasher, Dryer, Microwave, Range, Refrigerator, Washer

Laundry Features: Inside, Upper Level

Carport Spaces: 1

Exterior Features: Lighting, Sidewalk, Sliding Doors, Tennis Court(s)

Utilities: BB/HS Internet Available, Cable Available, Electricity Connected, Fiber Optics, Sewer Connected, Water Connected

Sewer: Public Sewer

Heating: Central

Property Details

Subdivision Name: WINDWARD POINTE ST PETERSBURG

Levels: Two

Foundation Details: Slab

Listing Terms: Cash, Conventional, FHA, VA Loan

Parcel Number: 18-30-17-98325-019-0131

Direction Faces: South

Construction Materials: Block, Stucco

Association Information

Association YN: Yes

Association Fee Includes: Pool, Escrow Reserves Fund, Insurance, Maintenance Structure, Maintenance Grounds, Management, Pest Control, Recreational Facilities, Sewer, Trash, Water

Community Features: Buyer Approval Required, Clubhouse, Playground, Pool, Sidewalks, Tennis Court(s)

Association Fee Frequency: Monthly

Association Amenities: Clubhouse, Maintenance, Pickleball Court(s), Playground, Pool, Tennis Court(s)

Fees&Taxes



Call us now

Phone: 727-888-3292

Email: RealtorCandis@gmail.com



Charles Rutenberg Realty, Inc.
THE STANDARD OF EXCELLENCE

Rooms

Room type	Dimensions	Level	Length	Width
Primary Bedroom	13x11	Second	11	13
Bedroom 2	13x11	Second	11	13
Living Room	16x11	First	11	16
Kitchen	11x8	First	8	11

Amenities & Features

Waterfront available: No

AttachedGarageYN: No

PoolPrivateYN: No

CommunityFeatures: Buyer Approval Required, Clubhouse, Playground, Pool, Sidewalks, Tennis Court(s)

Utilities: BB/HS Internet Available, Cable Available, Electricity Connected, Fiber Optics, Sewer Connected, Water Connected

Amenities: Dishwasher, Dryer, Microwave, Range, Refrigerator, Washer

GarageYN: No

FireplaceYN: No

Cooling: Central Air

ExteriorFeatures: Lighting, Sidewalk, Sliding Doors, Tennis Court(s)

Features: Ceiling Fans(s), Living Room/Dining Room Combo, PrimaryBedroom Upstairs, Solid Surface Counters

Building Details

NewConstructionYN: No

Exterior material: Block, Stucco

Heating: Central

Roof: Shingle

Miscellaneous

Ownership: Condominium

Occupant Type:
Vacant

Showing Requirements: Supra Lock Box, Call Before Showing, Call Listing Agent, ShowingTime



Call us now

Phone: 727-888-3292

Email: RealtorCandis@gmail.com

