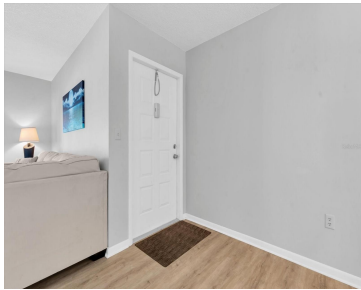


1207 PINE RIDGE CIRCLE TARPON SPRINGS FL 34688  
https://candiscarmichael.com



End-unit privacy + no neighbors above + assigned parking right out front. Welcome to a well-maintained, resort-style community in the sought-after East Lake Corridor—surrounded by nature yet close to shopping, restaurants, grocery, library, schools, parks, the Pinellas Trail, and more. Move-in ready with immediate occupancy, this corner end unit offers approximately 1,400 sq ft with [...]

- 3 beds
- 2 baths
- Residential
- Condominium
- Active
- 1396 sq ft



Courtesy of

**Listing Office:** EXP REALTY LLC  
**Status:** Active

**Office ID:** MFR261010944  
**MLS ID:** MFRTB8422498



**Call us now**  
Phone: 727-888-3292  
Email: RealtorCandis@gmail.com



---

## Description

**Virtual Tour:** <https://lightlineproductions.hd.pics/1207-Pine-Ridge-Cir-W/idx>

---

## Basics

|                                       |   |
|---------------------------------------|---|
| <b>Unit Number:</b> H2                | <b>Bathrooms Full:</b> 2                                  |
| <b>Date added:</b> Added 3 hours ago  | <b>Category:</b> Condominium                              |
| <b>Type:</b> Residential              | <b>Bedrooms:</b> 3 beds                                   |
| <b>Bathrooms:</b> 2 baths             | <b>Half baths:</b> 0 half baths                           |
| <b>Floors:</b> 1 floor                | <b>Area, sq ft:</b> 1396 sq ft                            |
| <b>Lot size, sq ft:</b> 35895 sq ft   | <b>Year built:</b> 1984                                   |
| <b>UnitNumber:</b> H2                 | <b>SubdivisionName:</b> PINE RIDGE AT LAKE TARPON VILLAGE |
| <b>ListOfficeName:</b> EXP REALTY LLC | <b>ListAOR:</b> mfrmls                                    |

---

## Location Details

|  |   |
|--|---|
| <b>Township:</b> 27                                      | <b>Road Surface Type:</b> Asphalt                     |
| <b>Road Responsibility:</b> Public Maintained Road       | <b>Elementary School:</b> Cypress Woods Elementary-PN |
| <b>Middle Or Junior School:</b> Tarpon Springs Middle-PN | <b>High School:</b> East Lake High-PN                 |

---

## Property Features



### Call us now

Phone: 727-888-3292

Email: [RealtorCandis@gmail.com](mailto:RealtorCandis@gmail.com)



Charles Rutenberg Realty, Inc.  
THE STANDARD OF EXCELLENCE

**Interior Features:** Ceiling Fans(s), Eat-in Kitchen, Walk-In Closet(s), Window Treatments

**Flooring:** Carpet, Ceramic Tile, Luxury Vinyl

**Patio And Porch Features:** Covered, Front Porch, Screened

**Pets Allowed:** Cats OK, Dogs OK, Number Limit, Size Limit, Yes

**Roof:** Shingle

**Window Features:** Blinds, Drapes

**Water Source:** Public

**Cooling:** Central Air

**Furnished:** Negotiable

**Appliances:** Dishwasher, Disposal, Dryer, Electric Water Heater, Microwave, Range, Refrigerator, Washer

**Laundry Features:** Inside, Laundry Room

**Parking Features:** Assigned, Guest

**Exterior Features:** Private Mailbox, Sliding Doors

**Security Features:** Smoke Detector(s)

**Utilities:** BB/HS Internet Available, Cable Available, Electricity Connected, Sewer Connected, Water Connected

**Sewer:** Public Sewer

**Heating:** Central, Electric

**Lot Features:** In County, Landscaped, Sidewalk, Paved, Unincorporated

---

## Property Details

**Subdivision Name:** PINE RIDGE AT LAKE TARPON VILLAGE

**Levels:** One

**Foundation Details:** Slab

**Listing Terms:** Cash, Conventional

**Parcel Number:** 22-27-16-71691-113-0820

**Direction Faces:** Northeast

**Construction Materials:** Block, Stucco

---

## Association Information

**Association YN:** Yes

**Association Fee Includes:** Cable TV, Common Area Taxes, Pool, Escrow Reserves Fund, Maintenance Structure, Maintenance Grounds, Recreational Facilities, Sewer, Trash, Water

**Association Amenities:** Clubhouse, Maintenance, Pool, Spa/Hot Tub, Tennis Court(s)

**Community Features:** Association Recreation - Owned, Buyer Approval Required, Clubhouse, Community Mailbox, Deed Restrictions, Pool, Sidewalks, Tennis Court(s), Street Lights



**Call us now**

Phone: 727-888-3292

Email: RealtorCandis@gmail.com



Charles Rutenberg Realty, Inc.  
THE STANDARD OF EXCELLENCE

# Fees&Taxes

Tax Year: 2024

Tax Annual Amount:  
\$1,249

Tax Legal Description: PINE RIDGE AT LAKE TARPON VILLAGE I-  
#2 CONDO PHASE VII BLDG 113, UNIT H2

Tax Lot: 0820

# Rooms

| Room type       | Dimensions | Level | Length | Width |
|-----------------|------------|-------|--------|-------|
| Living Room     | 19x13      | First | 13     | 19    |
| Dining Room     | 15x10      | First | 10     | 15    |
| Primary Bedroom | 16x13      | First | 13     | 16    |
| Bedroom 2       | 12x10      | First | 10     | 12    |
| Bedroom 3       | 13x11      | First | 11     | 13    |
| Kitchen         | 9x8        | First | 8      | 9     |

# Amenities & Features

**Waterfront available:** No

**AttachedGarageYN:** No

**PoolPrivateYN:** No

**Security Features:** Smoke Detector(s)

**WindowFeatures:** Blinds, Drapes

**Utilities:** BB/HS Internet Available, Cable Available, Electricity Connected, Sewer Connected, Water Connected

**Amenities:** Dishwasher, Disposal, Dryer, Electric Water Heater, Microwave, Range, Refrigerator, Washer

**GarageYN:** No

**FireplaceYN:** No

**Cooling:** Central Air

**CommunityFeatures:** Association Recreation - Owned, Buyer Approval Required, Clubhouse, Community Mailbox, Deed Restrictions, Pool, Sidewalks, Tennis Court(s), Street Lights

**ExteriorFeatures:** Private Mailbox, Sliding Doors

**Features:** Ceiling Fans(s), Eat-in Kitchen, Walk-In Closet(s), Window Treatments

---

## Building Details

**NewConstructionYN:** No

**Exterior material:** Block, Stucco

**Parking:** Assigned, Guest

**Heating:** Central, Electric

**Roof:** Shingle

---

## Miscellaneous

**Ownership:** Condominium

**Occupant Type:** Owner

**Showing Requirements:** Lock Box Electronic, ShowingTime



**Call us now**

Phone: 727-888-3292

Email: RealtorCandis@gmail.com



Charles Rutenberg Realty, Inc.  
THE STANDARD OF EXCELLENCE