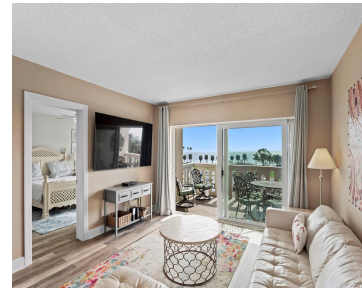


1200 SHORE DRIVE ST PETERSBURG FL 33701

<https://candiscarmichael.com>



Price Improvement! Wake up to breathtaking panoramic views of Tampa Bay from your updated 4th-floor (2/2) condo. Located in Historic Old NE neighborhood on coveted N Shore Dr NE directly across from the North Shore Aquatic Complex, soak in the coastal scenery on your oversized private patio where you can relax or entertain. Inside, the [...]

- 2 beds
- 2 baths
- Residential
- Condominium
- Active
- 1060 sq ft



Courtesy of

Listing Office: DALTON WADE INC

Status: Active

Office ID: MFR260031661

MLS ID: MFRTB8483865



Call us now

Phone: 727-888-3292

Email: RealtorCandis@gmail.com



Charles Rutenberg Realty, Inc
THE STANDARD OF EXCELLENCE

Description

Virtual Tour: <https://www.propertypanorama.com/instaview/stellar/TB8483865>

Basics

Unit Number: 407

Date added: Added 2 hours ago

Type: Residential

Bathrooms: 2 baths

Floors: 6 floors

Lot size, sq ft: 49677 sq ft

UnitNumber: 407

SubdivisionName: SHORE CREST CONDO

ListAOR: mfrmls

Bathrooms Full: 2

Category: Condominium

Bedrooms: 2 beds

Half baths: 0 half baths

Area, sq ft: 1060 sq ft

Year built: 1969

View: Park/Greenbelt, Tennis Court, Water

ListOfficeName: DALTON WADE INC

Location Details

Township: 31

Road Responsibility: Public Maintained Road

Middle Or Junior School: John Hopkins Middle-PN

Road Surface Type: Paved

Elementary School: Pinellas Central Elem-PN

High School: St. Petersburg High-PN

Property Features



Call us now

Phone: 727-888-3292

Email: RealtorCandis@gmail.com



Charles Rutenberg Realty, Inc.
THE STANDARD OF EXCELLENCE

Interior Features: Ceiling Fans(s), Living Room/Dining Room Combo, Open Floorplan, Solid Wood Cabinets, Split Bedroom, Thermostat, Walk-In Closet(s), Window Treatments

Flooring: Ceramic Tile, Luxury Vinyl, Tile

Patio And Porch Features: Covered, Patio

Carport YN: Yes

Pets Allowed: No

Roof: Membrane, Shingle

Window Features: Blinds, Drapes, Insulated Windows, Storm Window(s)

Utilities: Cable Connected, Electricity Connected, Sewer Connected, Water Connected

View: Park/Greenbelt, Tennis Court, Water

Sewer: Public Sewer

Heating: Central, Electric

Lot Features: Historic District, Landscaped, Level

Appliances: Built-In Oven, Dishwasher, Disposal, Freezer, Ice Maker, Microwave, Refrigerator

Laundry Features: Common Area, Laundry Room

Parking Features: Assigned, Covered, Ground Level

Carport Spaces: 1

Exterior Features: Lighting, Sidewalk, Storage

Security Features: Fire Sprinkler System, Key Card Entry, Security System Owned

Architectural Style: Florida

Vegetation: Trees/Landscaped

Water Source: Public

Cooling: Central Air

Furnished: Furnished

Property Details

Subdivision Name: SHORE CREST CONDO

Levels: One

Number Of Lots: 1

Construction Materials: Block, Stucco

Property Condition: Completed

Parcel Number: 17-31-17-81785-000-4070

Direction Faces: Southeast

Foundation Details: Slab

Listing Terms: Cash, Conventional

Association Information



Call us now

Phone: 727-888-3292

Email: RealtorCandis@gmail.com



Charles Rutenberg Realty, Inc.
THE STANDARD OF EXCELLENCE

Association YN: Yes

Association Fee: 885.59

Association Fee Frequency:
Monthly

Association Fee Includes: Cable TV, Common Area Taxes, Escrow Reserves Fund, Insurance, Internet, Maintenance Structure, Maintenance Grounds, Pest Control, Recreational Facilities, Sewer, Trash, Water

Association Amenities: Laundry, Lobby Key Required, Recreation Facilities, Security, Storage

Community Features: Buyer Approval Required, Sidewalks

Fees&Taxes

Tax Year: 2025

Tax Annual Amount: \$5,360

Tax Legal Description: SHORE CREST CONDO UNIT 407

Tax Lot: 4070

Rooms

Room type	Dimensions	Level	Length	Width
Primary Bedroom	12.11x13.8	First	13.8	12.11
Primary Bathroom	9.4x5.3	First	5.3	9.4
Bedroom 1	12.11x11.7	First	11.7	12.11
Bathroom 1	9.4x5.3	First	5.3	9.4
Dining Room	13.4x9.7	First	9.7	13.4
Living Room	13.4x12.11	First	12.11	13.4
Kitchen	9.1x14.4	First	14.4	9.1



Call us now

Phone: 727-888-3292

Email: RealtorCandis@gmail.com



Charles Rutenberg Realty, Inc.
THE STANDARD OF EXCELLENCE

Amenities & Features

Waterfront available: No

AttachedGarageYN: No

PoolPrivateYN: No

Security Features: Fire Sprinkler System, Key Card Entry, Security System Owned

WindowFeatures: Blinds, Drapes, Insulated Windows, Storm Window(s)

Utilities: Cable Connected, Electricity Connected, Sewer Connected, Water Connected

Amenities: Built-In Oven, Dishwasher, Disposal, Freezer, Ice Maker, Microwave, Refrigerator

GarageYN: No

FireplaceYN: No

Cooling: Central Air

CommunityFeatures: Buyer Approval Required, Sidewalks

ExteriorFeatures: Lighting, Sidewalk, Storage

Features: Ceiling Fans(s), Living Room/Dining Room Combo, Open Floorplan, Solid Wood Cabinets, Split Bedroom, Thermostat, Walk-In Closet(s), Window Treatments

Building Details

ArchitecturalStyle: Florida

Heating: Central, Electric

Roof: Membrane, Shingle

NewConstructionYN: No

Exterior material: Block, Stucco

Parking: Assigned, Covered, Ground Level

Miscellaneous

Ownership: Condominium **Occupant Type:** Vacant

Other Structures: Storage **Showing Requirements:** Lock Box Coded, ShowingTime



Call us now

Phone: 727-888-3292

Email: RealtorCandis@gmail.com



Charles Rutenberg Realty, Inc.
THE STANDARD OF EXCELLENCE