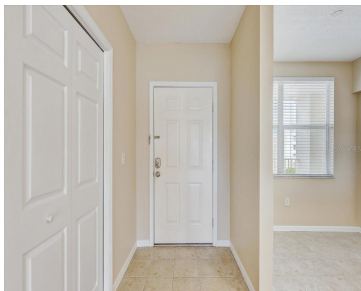


1200 COUNTRY CLUB DRIVE LARGO FL 33771

https://candiscarmichael.com



Welcome to a life of comfort and style at 1200 Country Club Dr. #3405 in Largo, FL! This beautifully maintained condo offers breathtaking views of the 10th fairway on the desirable East Lake Woodlands Golf Course. With over 1,300 sq. ft. of living space, you'll appreciate the room to entertain, relax, or simply enjoy Florida's [...]

- 2 beds
- 2 baths
- Residential
- Condominium
- Active
- 1320 sq ft



Courtesy of

Listing Office: CHARLES RUTENBERG REALTY INC
Status: Active

Office ID: MFR260000779
MLS ID: MFRTB8445020



Call us now
Phone: 727-888-3292
Email: RealtorCandis@gmail.com



Description

Virtual Tour: <https://www.propertypanorama.com/instaview/stellar/TB8445020>

Basics

Unit Number: 3405

Date added: Added 2 months ago

Type: Residential

Bathrooms: 2 baths

Floors: 1 floor

Lot size, sq ft: 0 sq ft

UnitNumber: 3405

SubdivisionName: COUNTRY CLUB CONDO AT EAST BAY

ListAOR: mfrmls

Bathrooms Full: 2

Category: Condominium

Bedrooms: 2 beds

Half baths: 0 half baths

Area, sq ft: 1320 sq ft

Year built: 2004

View: Golf Course

ListOfficeName: CHARLES RUTENBERG REALTY INC

Location Details

Township: 30

Road Surface Type: Asphalt

Property Features



Call us now

Phone: 727-888-3292

Email: RealtorCandis@gmail.com



Charles Rutenberg Realty, Inc.
THE STANDARD OF EXCELLENCE

Interior Features: Ceiling Fans(s), Eat-in Kitchen, High Ceilings, Living Room/Dining Room Combo, Walk-In Closet(s)

Flooring: Ceramic Tile, Laminate

Waterfront YN: Yes

Carport YN: Yes

Pets Allowed: Cats OK

Roof: Built-Up

View: Golf Course

Sewer: Public Sewer

Heating: Central, Electric

Appliances: Dishwasher, Disposal, Dryer, Microwave, Range, Refrigerator, Washer, Water Filtration System

Laundry Features: Inside

Waterfront Features: Lake Front

Carport Spaces: 1

Exterior Features: Balcony, Sliding Doors

Utilities: Cable Available, Cable Connected, Electricity Connected

Water Source: Public

Cooling: Central Air

Property Details

Subdivision Name: COUNTRY CLUB CONDO AT EAST BAY

Levels: One

Foundation Details: Slab

Listing Terms: Cash, Conventional

Parcel Number: 02-30-15-18402-000-3405

Direction Faces: West

Construction Materials: Block, Stucco

Association Information

Association YN: Yes

Association Fee Includes: Cable TV, Pool, Insurance, Internet, Maintenance Structure, Maintenance Grounds, Sewer, Trash, Water

Community Features: Buyer Approval Required, Clubhouse, Community Mailbox, Pool

Association Fee Frequency: Monthly

Association Amenities: Cable TV, Clubhouse, Elevator(s)

Fees&Taxes



Call us now

Phone: 727-888-3292

Email: RealtorCandis@gmail.com



Charles Rutenberg Realty, Inc.
THE STANDARD OF EXCELLENCE

Tax Year: 2023

Tax Annual Amount:
\$2,129

Tax Legal Description: COUNTRY CLUB CONDO III AT EAST BAY
UNIT 3405 TOGETHER WITH THE USE OF COVERED PARKING SPACE
23

Tax Lot: 3405

Rooms

Room type	Dimensions	Level	Length	Width
Primary Bedroom	14x14	First	14	14
Bathroom 2	14x12	First	12	14
Kitchen	15x10	First	10	15
Dinette	14x10	First	10	14
Living Room	15x12	First	12	15

Amenities & Features

Waterfront available: Yes

AttachedGarageYN: No

PoolPrivateYN: No

CommunityFeatures: Buyer Approval Required, Clubhouse, Community Mailbox, Pool

Utilities: Cable Available, Cable Connected, Electricity Connected

Amenities: Dishwasher, Disposal, Dryer, Microwave, Range, Refrigerator, Washer, Water Filtration System

GarageYN: No

FireplaceYN: No

Cooling: Central Air

ExteriorFeatures: Balcony, Sliding Doors

Features: Ceiling Fans(s), Eat-in Kitchen, High Ceilings, Living Room/Dining Room Combo, Walk-In Closet(s)



Call us now

Phone: 727-888-3292

Email: RealtorCandis@gmail.com



Building Details

NewConstructionYN: No

Exterior material: Block, Stucco

Heating: Central, Electric

Roof: Built-up

Miscellaneous

Ownership: Condominium

Showing Requirements: Supra Lock Box

Occupant Type: Owner



Call us now

Phone: 727-888-3292

Email: RealtorCandis@gmail.com



Charles Rutenberg Realty, Inc.
THE STANDARD OF EXCELLENCE