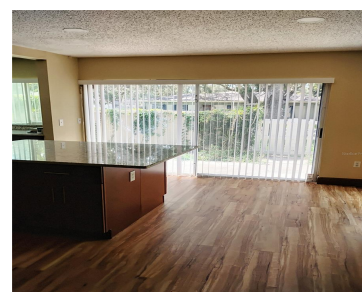


11721 RAIN TREE DRIVE TAMPA FL 33617

<https://candiscarmichael.com>



\$159,900



Perfect for the college student. Move in ready! Welcome to this amazing two-bedroom, two-bath condominium in the sought-after Raintree Village community near the University of South Florida. This beautifully landscaped neighborhood features mature oak trees, tennis courts and swimming pools. Enjoy maintenance-free living in this charming home featuring a spacious open-concept great room, appliances included. [...]

- 2 beds
- 2 baths
- Residential
- Condominium
- Active
- 1104 sq ft



Courtesy of

Listing Office: DALTON WADE INC

Status: Active

Office ID: MFR260031661

MLS ID: MFRTB8407185



Call us now

Phone: 727-888-3292

Email: RealtorCandis@gmail.com



Charles Rutenberg Realty, Inc
THE STANDARD OF EXCELLENCE

Description

Virtual Tour: <https://www.propertypanorama.com/instaview/stellar/TB8407185>

Basics

Bathrooms Full: 1

Date added: Added 3 hours ago

Type: Residential

Bathrooms: 2 baths

Floors: 2 floors

Lot size, sq ft: 4 sq ft

SubdivisionName: RAINTREE MANOR HOMES
CONDOMINI

GarageSpaces: 1

Bathrooms Half: 1

Category: Condominium

Bedrooms: 2 beds

Half baths: 1 half bath

Area, sq ft: 1104 sq ft

Year built: 1975

ListOfficeName: DALTON WADE INC

ListAOR: mfrmls

Location Details

Township: 28

Road Surface Type: Paved

Property Features



Call us now

Phone: 727-888-3292

Email: RealtorCandis@gmail.com



Charles Rutenberg Realty, Inc.
THE STANDARD OF EXCELLENCE

Interior Features: Ceiling Fans(s)

Flooring: Vinyl

Garage YN: Yes

Garage Spaces: 1

Exterior Features: Sliding Doors

Utilities: Cable Available, Electricity Available, Sewer Available, Water Available

Sewer: Public Sewer

Heating: Central

Appliances: Microwave, Range, Refrigerator

Laundry Features: Inside

Attached Garage YN: Yes

Pets Allowed: Dogs OK, Size Limit, Yes

Roof: Shingle

Water Source: Public

Cooling: Central Air

Property Details

Subdivision Name: RAINTREE MANOR HOMES CONDOMINI

Levels: Two

Foundation Details: Slab

Listing Terms: Cash, Conventional, FHA, VA Loan

Parcel Number: T-10-28-19-116-000010-11721.0

Direction Faces: Southeast

Construction Materials: Block, Stucco

Association Information

Association YN: Yes

Association Fee Frequency: Monthly

Association Amenities: Pool, Tennis Court(s)

Association Fee: 784.15

Association Fee Includes: Cable TV, Internet, Maintenance Structure, Maintenance Grounds, Pool, Sewer, Trash, Water

Community Features: Clubhouse, Pool, Sidewalks, Tennis Court(s)

Fees&Taxes



Call us now

Phone: 727-888-3292

Email: RealtorCandis@gmail.com



Charles Rutenberg Realty, Inc.
THE STANDARD OF EXCELLENCE

Tax Year: 2024

Tax Annual Amount: \$512

Tax Legal Description: RAINTREE MANOR HOMES CONDOMINIUM PHASE I BUILDING NO 10 UNIT TYPE B APARTMENT NO 11721 1.538 PERCENTAGE UNDIVIDED INTEREST IN COMMON ELEMENTS

Rooms

Room type	Dimensions	Level	Length	Width
Primary Bedroom	14x9	Second	9	14
Dining Room		First		
Kitchen		First		
Living Room		First		

Amenities & Features

Waterfront available: No

AttachedGarageYN: Yes

PoolPrivateYN: No

CommunityFeatures: Clubhouse, Pool, Sidewalks, Tennis Court(s)

Utilities: Cable Available, Electricity Available, Sewer Available, Water Available

Amenities: Microwave, Range, Refrigerator

GarageYN: Yes

FireplaceYN: No

Cooling: Central Air

ExteriorFeatures: Sliding Doors

Features: Ceiling Fans(s)

Building Details



Call us now

Phone: 727-888-3292

Email: RealtorCandis@gmail.com



Charles Rutenberg Realty, Inc.
THE STANDARD OF EXCELLENCE

NewConstructionYN: No

Exterior material: Block, Stucco

Heating: Central

Roof: Shingle

Miscellaneous

Ownership: Condominium

Occupant Type: Owner

Showing Requirements: Call Before Showing



Call us now

Phone: 727-888-3292

Email: RealtorCandis@gmail.com



Charles Rutenberg Realty, Inc.
THE STANDARD OF EXCELLENCE