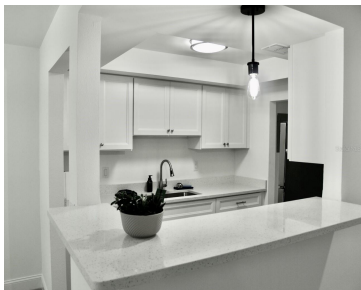


11525 8TH WAY ST PETERSBURG FL 33716

<https://candiscarmichael.com>



PRICED UNDER MARKET VALUE!!! ENTIRE CONDO HAS BEEN COMPLETELY RE-DONE.....EVERYTHING BRAND NEW AND READY FOR A BRAND NEW OWNER! THIS BEAUTIFUL 1 BEDROOM, 1 BATH CONDO IS TURN KEY AND OFFERS ALL MODERN FIXTURES AND DESIGN! PRIME LOCATION WITH THE COMMUNITY POOL RIGHT OFF OF THE PATIO!! INTERIOR LAUNDRY WITH WASHER AND DRYER, ALL NEW [...]

- 1 bed
- 1 bath
- Residential
- Condominium
- Active
- 740 sq ft



Courtesy of

Listing Office: DALTON WADE INC

Status: Active

Office ID: MFR260031661

MLS ID: MFRTB8461680



Call us now

Phone: 727-888-3292

Email: RealtorCandis@gmail.com



Description

Virtual Tour: <https://www.propertypanorama.com/instaview/stellar/TB8461680>

Basics

Unit Number: 509

Date added: Added 4 hours ago

Type: Residential

Bathrooms: 1 bath

Floors: 1 floor

Year built: 1975

View: Pool

ListOfficeName: DALTON WADE INC

Bathrooms Full: 1

Category: Condominium

Bedrooms: 1 bed

Half baths: 0 half baths

Area, sq ft: 740 sq ft

UnitNumber: 509

SubdivisionName: PEPPERTREE VILLAGE CONDO

ListAOR: mfrmls

Location Details

Township: 30

Road Surface Type: Asphalt

Elementary School: Pinellas Central Elem-PN **Middle Or Junior School:** Fitzgerald Middle-PN

High School: Pinellas Park High-PN

Property Features



Call us now

Phone: 727-888-3292

Email: RealtorCandis@gmail.com



Charles Rutenberg Realty, Inc.
THE STANDARD OF EXCELLENCE

Interior Features: Ceiling Fans(s)

Flooring: Luxury Vinyl

Patio And Porch Features: Covered, Patio, Rear Porch, Screened

Pets Allowed: Cats OK, Dogs OK

Roof: Shingle

View: Pool

Sewer: Public Sewer

Heating: Central

Appliances: Dishwasher, Range, Refrigerator

Laundry Features: Inside

Parking Features: Deeded

Exterior Features: Private Entrance, Sidewalk, Sliding Doors

Utilities: Cable Available, Electricity Connected, Public, Sewer Connected, Water Connected

Water Source: Public

Cooling: Central Air

Furnished: Unfurnished

Property Details

Subdivision Name: PEPPERTREE VILLAGE CONDO

Levels: One

Foundation Details: Slab

Listing Terms: Cash, Conventional

Parcel Number: 18-30-17-68419-005-0509

Direction Faces: West

Construction Materials: Block

Property Condition: Completed

Association Information

Association YN: Yes

Association Fee Frequency: Monthly

Community Features: Pool, Sidewalks, Tennis Court(s)

Association Fee: 637.01

Association Fee Includes: Cable TV, Common Area Taxes, Pool, Internet, Maintenance Structure, Maintenance Grounds, Recreational Facilities, Sewer, Trash, Water

Fees&Taxes



Call us now

Phone: 727-888-3292

Email: RealtorCandis@gmail.com



Charles Rutenberg Realty, Inc.
THE STANDARD OF EXCELLENCE

Rooms

Room type	Dimensions	Level	Length	Width
Great Room	13x17.5	First	17.5	13
Kitchen	8x7.7	First	7.7	8
Primary Bedroom	11x13	First	13	11

Amenities & Features

- Waterfront available:** No

AttachedGarageYN: No

PoolPrivateYN: No

CommunityFeatures: Pool, Sidewalks, Tennis Court(s)

Utilities: Cable Available, Electricity Connected, Public, Sewer Connected, Water Connected

Amenities: Dishwasher, Range, Refrigerator
- GarageYN:** No

FireplaceYN: No

Cooling: Central Air

ExteriorFeatures: Private Entrance, Sidewalk, Sliding Doors

Features: Ceiling Fans(s)

Building Details

- NewConstructionYN:** No

Exterior material: Block

Parking: Deeded
- Heating:** Central

Roof: Shingle

Miscellaneous

Ownership: Fee Simple

Other Equipment: Irrigation Equipment,
Private Entrance

Occupant Type: Vacant

Showing Requirements: Supra Lock Box,
ShowingTime



Call us now

Phone: 727-888-3292

Email: RealtorCandis@gmail.com



Charles Rutenberg Realty, Inc.
THE STANDARD OF EXCELLENCE