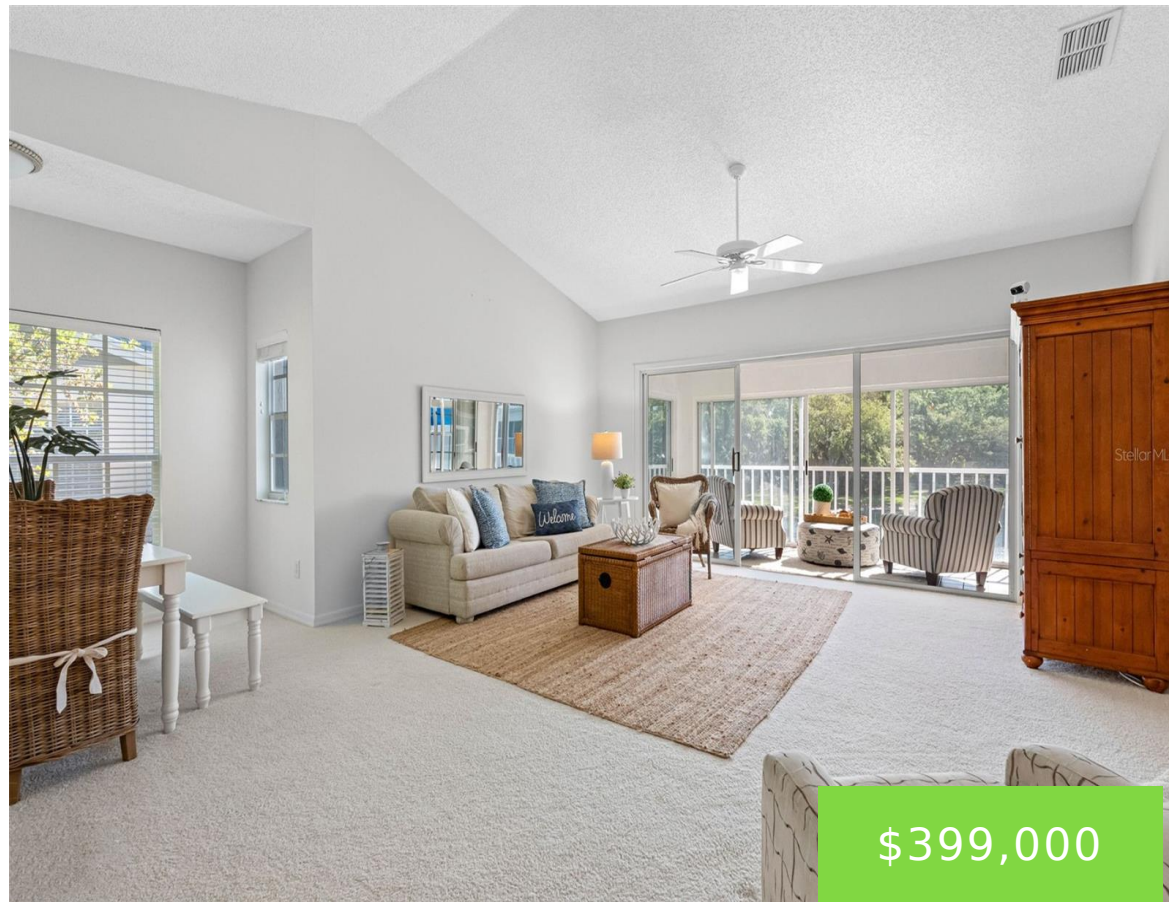


11351 SHIPWATCH LANE LARGO FL 33774

<https://candiscarmichael.com>



Waterfront gated community, go to the beach. Corner unit with relaxing water views, rare three-bedroom, two-bath, heated 1,445-square-foot, second-floor villa conveys with an 11.4-by-20-foot private garage plus a two-car tandem parking pad. Glass-enclosed 16-by-8-foot finished lanai with direct water views enjoys sunrises and sunshine. Main bedroom and all living areas overlook these direct water views. [...]

- 3 beds
- 2 baths
- Residential
- Condominium
- Active
- 1445 sq ft



Courtesy of

Listing Office: PREMIER SOTHEBY'S INTL REALTY

Status: Active

Office ID: MFR260033547

MLS ID: MFRTB8493556

Description



Call us now

Phone: 727-888-3292

Email: RealtorCandis@gmail.com



Charles Rutenberg Realty, Inc.
THE STANDARD OF EXCELLENCE

Virtual Tour:

<https://www.zillow.com/view-imx/a50a2339-e7a7-4604-8581-59df66407232?wl=true&setAttribution=mls&initialViewType=pano>

Basics

Unit Number: 1841

Date added: Added 2 months ago

Type: Residential

Bathrooms: 2 baths

Floors: 2 floors

Lot size, sq ft: 2352240 sq ft

UnitNumber: 1841

ListOfficeName: PREMIER SOTHEBY'S INTL REALTY

ListAOR: mfrmls

Bathrooms Full: 2

Category: Condominium

Bedrooms: 3 beds

Half baths: 0 half baths

Area, sq ft: 1445 sq ft

Year built: 1992

SubdivisionName: SHIPWATCH

GarageSpaces: 1

Location Details

Township: 30

Road Surface Type: Asphalt, Paved

Property Features



Call us now

Phone: 727-888-3292

Email: RealtorCandis@gmail.com



Charles Rutenberg Realty, Inc.
THE STANDARD OF EXCELLENCE

Interior Features: Built-in Features, Cathedral Ceiling(s), Ceiling Fans(s), Eat-in Kitchen, High Ceilings, Open Floorplan, Other, Primary Bedroom Main Floor, Solid Wood Cabinets, Split Bedroom, Walk-In Closet(s)

Flooring: Carpet, Ceramic Tile

Pool Features: Heated, In Ground, Lap

Spa Features: Heated, In Ground

Waterfront Features: Pond

Garage YN: Yes

Pets Allowed: Size Limit, Yes

Roof: Shingle

Window Features: Blinds

Water Source: Public

Cooling: Central Air

Furnished: Negotiable

Appliances: Dishwasher, Disposal, Dryer, Electric Water Heater, Exhaust Fan, Microwave, Range, Refrigerator, Washer

Laundry Features: Electric Dryer Hookup, Inside, Washer Hookup

Spa YN: Yes

Waterfront YN: Yes

Parking Features: Guest, Other, Parking Pad

Garage Spaces: 1

Exterior Features: Balcony, Outdoor Grill, Private Mailbox, Sidewalk, Sliding Doors, Storage, Tennis Court(s)

Security Features: Gated Community

Utilities: Cable Connected, Electricity Connected, Sewer Connected, Underground Utilities, Water Connected

Sewer: Public Sewer

Heating: Central, Electric

Property Details

Subdivision Name: SHIPWATCH

Levels: One

Foundation Details: Block, Slab

Listing Terms: Cash, Conventional

Parcel Number: 13-30-14-81172-001-1841

Direction Faces: West

Construction Materials: Block, Frame

Association Information



Call us now

Phone: 727-888-3292

Email: RealtorCandis@gmail.com



Charles Rutenberg Realty, Inc.
THE STANDARD OF EXCELLENCE

Association YN: Yes

Association Fee Includes: Cable TV, Common Area Taxes, Pool, Escrow Reserves Fund, Internet, Maintenance Structure, Maintenance Grounds, Management, Private Road, Recreational Facilities, Sewer, Trash, Water

Community Features: Association Recreation - Owned, Buyer Approval Required, Clubhouse, Deed Restrictions, Fitness Center, Gated Community - No Guard, Golf Carts OK, Pool, Restaurant, Sidewalks, Tennis Court(s)

Fees&Taxes

Tax Year: 2025

Tax Annual Amount: \$5,094

Tax Legal Description: SHIPWATCH EIGHT CONDO PHASE 1
BLDG 11351, UNIT 1841

Tax Lot: 1841

Rooms



Call us now

Phone: 727-888-3292

Email: RealtorCandis@gmail.com



Charles Rutenberg Realty, Inc.
THE STANDARD OF EXCELLENCE

Room type	Dimensions	Level	Length	Width
Balcony/Porch/Lanai	8x13	First	13	8
Great Room	18x16	First	16	18
Dining Room	9x10	First	10	9
Kitchen	14x10	First	10	14
Primary Bedroom	14x13	First	13	14
Primary Bathroom	12x10	First	10	12
Bedroom 2	13x13	First	13	13
Bathroom 2	8x5	First	5	8
Bedroom 3	11x10	First	10	11
Laundry	6x3	First	3	6

Amenities & Features



Call us now

Phone: 727-888-3292

Email: RealtorCandis@gmail.com



Charles Rutenberg Realty, Inc.
THE STANDARD OF EXCELLENCE

Waterfront available: Yes

AttachedGarageYN: No

PoolPrivateYN: No

Spa Features: Heated, In Ground

CommunityFeatures: Association Recreation - Owned, Buyer Approval Required, Clubhouse, Deed Restrictions, Fitness Center, Gated Community - No Guard, Golf Carts OK, Pool, Restaurant, Sidewalks, Tennis Court(s)

ExteriorFeatures: Balcony, Outdoor Grill, Private Mailbox, Sidewalk, Sliding Doors, Storage, Tennis Court(s)

Utilities: Cable Connected, Electricity Connected, Sewer Connected, Underground Utilities, Water Connected

Amenities: Dishwasher, Disposal, Dryer, Electric Water Heater, Exhaust Fan, Microwave, Range, Refrigerator, Washer

GarageYN: Yes

FireplaceYN: No

Cooling: Central Air

Security Features: Gated Community

WindowFeatures: Blinds

PoolFeatures: Heated, In Ground, Lap

Features: Built-in Features, Cathedral Ceiling(s), Ceiling Fans(s), Eat-in Kitchen, High Ceilings, Open Floorplan, Other, Primary Bedroom Main Floor, Solid Wood Cabinets, Split Bedroom, Walk-In Closet(s)

Building Details

NewConstructionYN: No

Exterior material: Block, Frame

Parking: Guest, Other, Parking Pad

Heating: Central, Electric

Roof: Shingle

Miscellaneous

Ownership: Condominium

Other Equipment: Irrigation Equipment

Occupant Type: Vacant

Showing Requirements: Supra Lock Box, Call Before Showing, Call Listing Agent



Call us now

Phone: 727-888-3292

Email: RealtorCandis@gmail.com



Charles Rutenberg Realty, Inc.
THE STANDARD OF EXCELLENCE