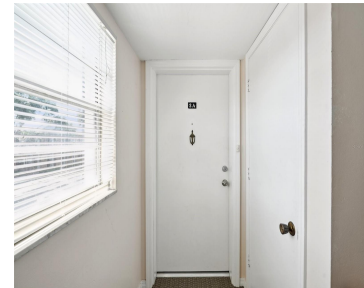


1115 RUE DES CHATEAUX SOUTH PASADENA FL 33707

<https://candiscarmichael.com>



Location! Location! Location! Priced to sell! 1.6 miles to St. Pete Beach or 7 miles to downtown St Pete, right on the Sun Runner route to both. Here is your 2nd floor "high and dry" condo just .2 miles to Bay View Park on the water where you can fish, enjoy the playground or statuary. [...]

- 1 bed
- 1 bath
- Residential
- Condominium
- Active
- 741 sq ft



Courtesy of

Listing Office: REALTY EXPERTS

Status: Active

Office ID: MFR260031755

MLS ID: MFRTB8509010



Call us now

Phone: 727-888-3292

Email: RealtorCandis@gmail.com



Charles Rutenberg Realty, Inc.
THE STANDARD OF EXCELLENCE

Description

Virtual Tour: <https://www.propertypanorama.com/instaview/stellar/TB8509010>

Basics

Unit Number: 2A

Date added: Added 2 hours ago

Type: Residential

Bathrooms: 1 bath

Floors: 1 floor

Lot size, sq ft: 0 sq ft

UnitNumber: 2A

ListOfficeName: REALTY EXPERTS

Bathrooms Full: 1

Category: Condominium

Bedrooms: 1 bed

Half baths: 0 half baths

Area, sq ft: 741 sq ft

Year built: 1968

SubdivisionName: LES CHATEAUX CONDO

ListAOR: mfrmls

Location Details

Township: 31

Road Surface Type: Paved

Elementary School: Azalea Elementary-PN **Middle Or Junior School:** Azalea Middle-PN

High School: Boca Ciega High-PN

Property Features



Call us now

Phone: 727-888-3292

Email: RealtorCandis@gmail.com



Charles Rutenberg Realty, Inc.
THE STANDARD OF EXCELLENCE

Interior Features: Ceiling Fans(s), Living Room/Dining Room Combo, Walk-In Closet(s)

Flooring: Ceramic Tile, Hardwood

Pets Allowed: Cats OK

Roof: Shingle

Water Source: Public

Cooling: Central Air

Furnished: Unfurnished

Appliances: Disposal, Microwave, Range, Refrigerator

Laundry Features: Common Area

Exterior Features: Courtyard, Outdoor Grill

Utilities: Cable Connected, Electricity Connected, Sewer Connected, Water Connected

Sewer: Public Sewer

Heating: Heat Pump

Property Details

Subdivision Name: LES CHATEAUX CONDO

Levels: One

Foundation Details: Block

Listing Terms: Cash, Conventional

Parcel Number: 30-31-16-51143-115-0321

Direction Faces: East

Construction Materials: Block, Stucco

Association Information

Association YN: Yes

Association Fee Frequency: Monthly

Community Features: Clubhouse, Community Mailbox, Fitness Center, Pool

Association Fee: 656.82

Association Fee Includes: Cable TV, Common Area Taxes, Pool, Escrow Reserves Fund, Insurance, Maintenance Structure, Maintenance Grounds, Maintenance, Recreational Facilities, Sewer, Trash, Water

Fees&Taxes



Call us now

Phone: 727-888-3292

Email: RealtorCandis@gmail.com



Charles Rutenberg Realty, Inc.
THE STANDARD OF EXCELLENCE

Tax Year: 2025

Tax Annual Amount:
\$2,725

Tax Legal Description: LES CHATEAUX CONDO BLDG 1115, UNIT 2A
TOGETHER WITH THE USE OF PARKING SPACE 11152A

Rooms

Room type	Level
Primary Bedroom	First
Primary Bathroom	First
Kitchen	First
Living Room	First

Amenities & Features

Waterfront available: No

AttachedGarageYN: No

PoolPrivateYN: No

CommunityFeatures: Clubhouse, Community Mailbox, Fitness Center, Pool

Utilities: Cable Connected, Electricity Connected, Sewer Connected, Water Connected

Amenities: Disposal, Microwave, Range, Refrigerator

GarageYN: No

FireplaceYN: No

Cooling: Central Air

ExteriorFeatures: Courtyard, Outdoor Grill

Features: Ceiling Fans(s), Living Room/Dining Room Combo, Walk-In Closet(s)

Building Details



Call us now

Phone: 727-888-3292

Email: RealtorCandis@gmail.com



Charles Rutenberg Realty, Inc.
THE STANDARD OF EXCELLENCE

NewConstructionYN: No

Exterior material: Block, Stucco

Heating: Heat Pump

Roof: Shingle

Miscellaneous

Ownership: Condominium

Occupant Type: Vacant

Showing Requirements: Combination Lock Box



Call us now

Phone: 727-888-3292

Email: RealtorCandis@gmail.com



Charles Rutenberg Realty, Inc.
THE STANDARD OF EXCELLENCE