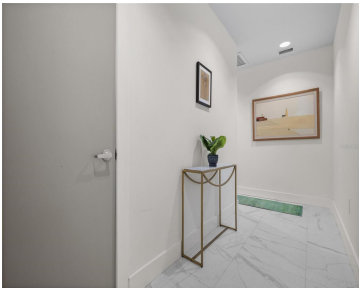
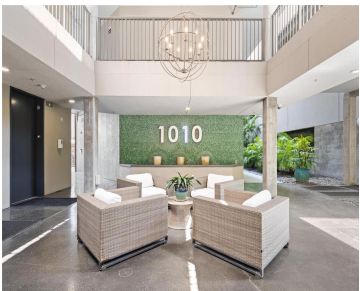
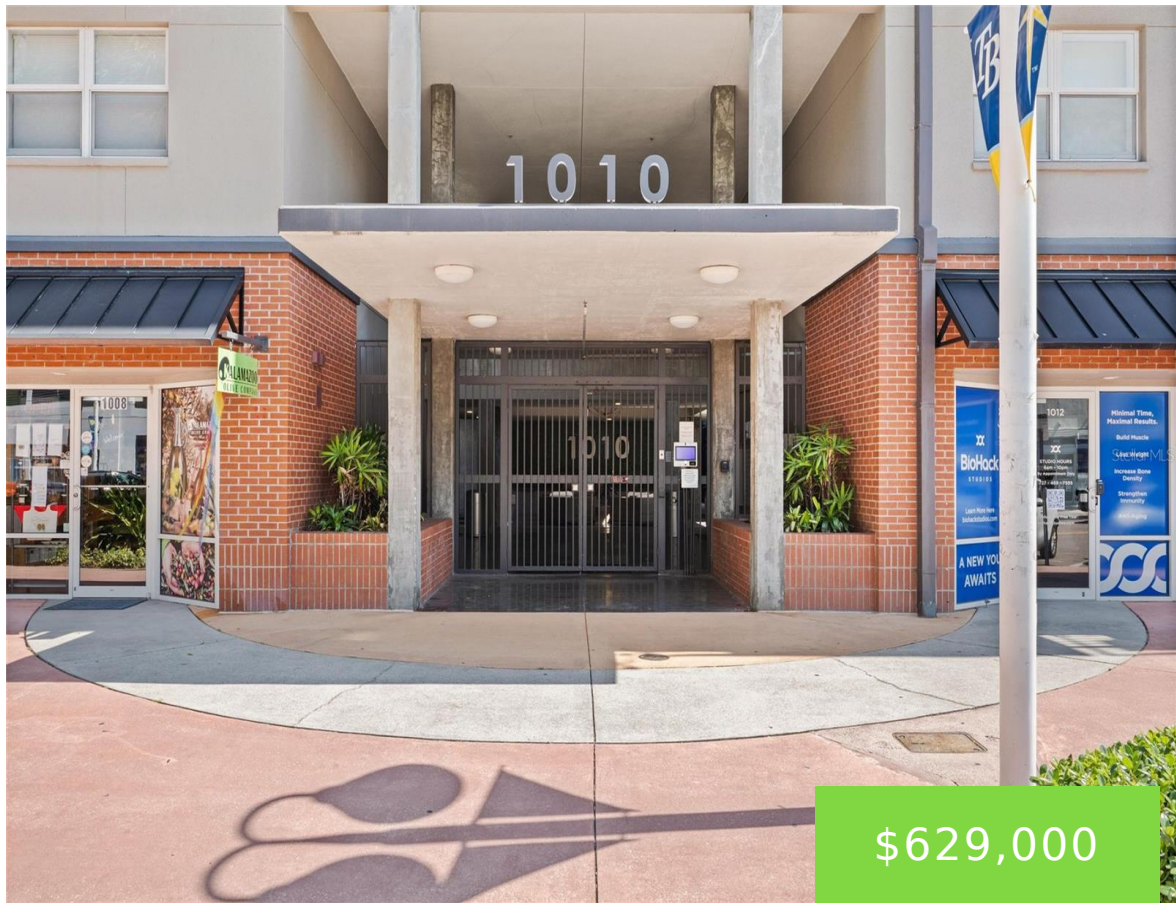


1010 CENTRAL AVE ST PETERSBURG FL 33705

https://candiscarmichael.com



Modern Downtown Living with Balcony & 2 Parking Spaces! Welcome to 1010 Central Ave #227, a sleek and stylish 2-bedroom, 2-bath condo nestled in the heart of St. Petersburg’s vibrant EDGE District. Located in one of the city’s most walkable and desirable neighborhoods, this residence offers the ultimate in urban living with the comfort of [...]

- 2 beds
- 2 baths
- Residential
- Condominium
- Active
- 1038 sq ft



Courtesy of

Listing Office: NORTHSTAR REALTY

Status: Active

Office ID: MFR283504594

MLS ID: MFRTB8388417



Call us now

Phone: 727-888-3292
Email: RealtorCandis@gmail.com



Description

Virtual Tour: <https://www.propertypanorama.com/instaview/stellar/TB8388417>

Basics

Unit Number: 227

Date added: Added 2 months ago

Type: Residential

Bathrooms: 2 baths

Floors: 4 floors

Year built: 2007

SubdivisionName: 1010 CENTRAL CONDO

ListAOR: mfrmls

Bathrooms Full: 2

Category: Condominium

Bedrooms: 2 beds

Half baths: 0 half baths

Area, sq ft: 1038 sq ft

UnitNumber: 227

ListOfficeName: NORTHSTAR REALTY

Location Details

Township: 31

Road Surface Type: Concrete, Paved

Property Features



Call us now

Phone: 727-888-3292

Email: RealtorCandis@gmail.com



Charles Rutenberg Realty, Inc.
THE STANDARD OF EXCELLENCE

Interior Features: Ceiling Fans(s), Kitchen/Family Room Combo, Thermostat

Flooring: Tile

Parking Features: Covered, Guest, Reserved

Exterior Features: Balcony, Lighting, Outdoor Grill

Security Features: Key Card Entry, Secured Garage/Parking

Water Source: Public

Cooling: Central Air

Furnished: Negotiable

Appliances: Built-In Oven, Dishwasher, Disposal, Dryer, Electric Water Heater, Microwave, Range, Refrigerator, Washer, Water Softener

Laundry Features: Inside

Pets Allowed: Breed Restrictions, Dogs OK, Number Limit, Size Limit

Roof: Other

Utilities: BB/HS Internet Available, Electricity Connected, Public, Sewer Connected, Water Connected

Sewer: Public Sewer

Heating: Central

Property Details

Subdivision Name: 1010 CENTRAL CONDO

Levels: One

Foundation Details: Slab

Listing Terms: Cash, Conventional

Parcel Number: 24-31-16-63981-000-2270

Direction Faces: Southwest

Construction Materials: Block, Concrete, Stucco

Association Information

Association YN: Yes

Association Fee Frequency: Monthly

Association Amenities: Clubhouse, Elevator(s), Fitness Center, Lobby Key Required, Pool

Association Fee: 562

Association Fee Includes: Pool, Escrow Reserves Fund, Insurance, Maintenance Structure, Maintenance Grounds, Maintenance, Management, Recreational Facilities, Sewer, Trash, Water

Community Features: Clubhouse, Pool

Fees&Taxes



Call us now

Phone: 727-888-3292

Email: RealtorCandis@gmail.com



Charles Rutenberg Realty, Inc.
THE STANDARD OF EXCELLENCE

Tax Legal Description: 1010 CENTRAL CONDO UNIT 227 TOGETHER WITH THE USE OF PARKING SPACES 85 & 114

Rooms

Room type	Dimensions	Level	Length	Width
Primary Bedroom	12x14	First	14	12
Kitchen	8x10	First	10	8
Living Room	11x13	First	13	11

Amenities & Features

- Waterfront available:** No

AttachedGarageYN: No

PoolPrivateYN: No

Security Features: Key Card Entry, Secured Garage/Parking

ExteriorFeatures: Balcony, Lighting, Outdoor Grill

Features: Ceiling Fans(s), Kitchen/Family Room Combo, Thermostat
- GarageYN:** No

FireplaceYN: No

Cooling: Central Air

CommunityFeatures: Clubhouse, Pool

Utilities: BB/HS Internet Available, Electricity Connected, Public, Sewer Connected, Water Connected

Amenities: Built-In Oven, Dishwasher, Disposal, Dryer, Electric Water Heater, Microwave, Range, Refrigerator, Washer, Water Softener

Building Details

NewConstructionYN: No

Exterior material: Block, Concrete, Stucco

Parking: Covered, Guest, Reserved

Heating: Central

Roof: Other

Miscellaneous

Ownership: Condominium

Occupant Type:
Tenant

Showing Requirements: Appointment Only, Call Listing Agent, Listing Agent Must Accompany, ShowingTime



Call us now

Phone: 727-888-3292

Email: RealtorCandis@gmail.com

