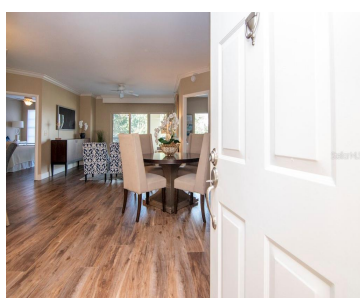
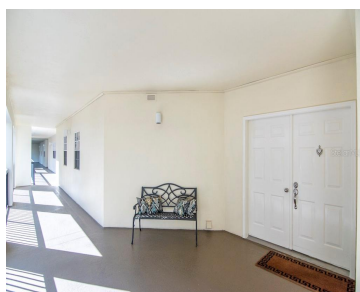
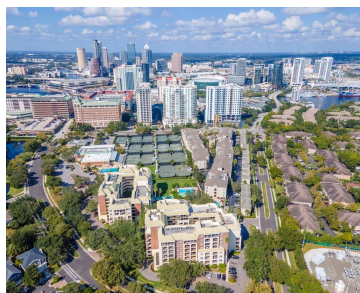


1002 HARBOUR ISLAND BOULEVARD TAMPA FL 33602

<https://candiscarmichael.com>



A beautifully upgraded condominium on prestigious Harbour Island presents an exceptional opportunity for enhanced city living. This thoughtfully updated third-floor residence features a smart split-bedroom layout with a generously scaled primary suite and a fully remodeled walk-in shower, a second bedroom positioned across the unit with direct access to a beautifully appointed guest bathroom, and [...]

- 3 beds
- 2 baths
- Residential
- Condominium
- Active
- 1368 sq ft



Courtesy of

Listing Office: SMITH & ASSOCIATES REAL ESTATE

Status: Active

Office ID: MFR616100

MLS ID: MFRTB8441963



Call us now

Phone: 727-888-3292
Email: RealtorCandis@gmail.com



Basics

Unit Number: 1302

Date added: Added 2 hours ago

Type: Residential

Bathrooms: 2 baths

Floors: 6 floors

Lot size, sq ft: 2 sq ft

UnitNumber: 1302

SubdivisionName: HARBOUR COURT A
CONDO

GarageSpaces: 1

Bathrooms Full: 2

Category: Condominium

Bedrooms: 3 beds

Half baths: 0 half baths

Area, sq ft: 1368 sq ft

Year built: 1987

View: City, Pool, Trees/Woods

ListOfficeName: SMITH & ASSOCIATES REAL
ESTATE

ListAOR: mfrmls

Location Details

Township: 29

Road Responsibility: Private Maintained Road

Middle Or Junior School: Wilson-HB

Road Surface Type: Asphalt

Elementary School: Gorrie-HB

High School: Plant-HB

Property Features



Call us now

Phone: 727-888-3292

Email: RealtorCandis@gmail.com



Charles Rutenberg Realty, Inc.
THE STANDARD OF EXCELLENCE

Interior Features: Built-in Features, Ceiling Fans(s), Crown Molding, Eat-in Kitchen, Open Floorplan, Solid Surface Counters

Flooring: Tile

Patio And Porch Features: Covered

Spa YN: Yes

Parking Features: Assigned, Common, Covered, Ground Level, Guest, Reserved, Basement

Attached Garage YN: Yes

Pets Allowed: Yes

Roof: Other, Tile

Window Features: Blinds

Utilities: Cable Available, Electricity Connected, Sewer Connected, Underground Utilities, Water Connected

View: City, Pool, Trees/Woods

Sewer: Public Sewer

Heating: Central

Appliances: Dishwasher, Disposal, Dryer, Freezer, Ice Maker, Microwave, Range, Refrigerator, Washer

Laundry Features: In Kitchen, Laundry Closet

Pool Features: Gunite, In Ground

Spa Features: Heated, In Ground

Garage YN: Yes

Garage Spaces: 1

Exterior Features: Balcony, Lighting, Sidewalk, Sliding Doors

Security Features: Gated Community, Key Card Entry, Security Gate, Smoke Detector(s)

Architectural Style: Florida, Traditional

Vegetation: Trees/Landscaped

Water Source: Public

Cooling: Central Air

Lot Features: Flood Insurance Required, FloodZone, City Limits, Near Marina, Near Public Transit, Sidewalk, Paved, Private

Property Details

Subdivision Name: HARBOUR COURT A CONDO

Levels: One

Foundation Details: Slab

Listing Terms: Cash, Conventional

Parcel Number: A-30-29-19-52D-000001-01302.0

Direction Faces: North

Construction Materials: Block, Brick, Stucco, Frame

Association Information



Call us now

Phone: 727-888-3292

Email: RealtorCandis@gmail.com



Charles Rutenberg Realty, Inc.
THE STANDARD OF EXCELLENCE

Association YN: Yes

Association Fee Frequency:
Monthly

Association Fee Includes: Guard - 24 Hour, Cable TV, Common Area Taxes, Pool, Escrow Reserves Fund, Insurance, Internet, Maintenance Structure, Maintenance Grounds, Management, Pest Control, Private Road, Recreational Facilities, Security, Sewer, Trash, Water

Association Amenities:
Elevators, Gated, Lobby Key Required, Maintenance, Park, Playground, Pool, Recreation Facilities, Security, Spa/Hot Tub, Storage

Community Features: Association Recreation - Owned, Buyer Approval Required, Deed Restrictions, Gated Community - Guard, Park, Playground, Pool, Sidewalks, Street Lights

Fees&Taxes

Tax Year: 2024

Tax Annual Amount: \$9,325

Tax Legal Description: HARBOUR COURT A CONDOMINIUM
PHASE 1 BLDG 1 UNIT 1302

Tax Lot: 013020

Rooms



Call us now

Phone: 727-888-3292

Email: RealtorCandis@gmail.com



Charles Rutenberg Realty, Inc.
THE STANDARD OF EXCELLENCE

Room type	Dimensions	Level	Length	Width
Living Room	10x15	First	15	10
Dining Room	10x13	First	13	10
Kitchen	11x11	First	11	11
Dinette	5x6	First	6	5
Primary Bedroom	11x15	First	15	11
Bedroom 2	9x12	First	12	9
Bedroom 3	9x12	First	12	9
Balcony/Porch/Lanai	7x26	First	26	7

Amenities & Features



Call us now

Phone: 727-888-3292

Email: RealtorCandis@gmail.com



Waterfront available: No

AttachedGarageYN: Yes

PoolPrivateYN: No

Spa Features: Heated, In Ground

CommunityFeatures: Association Recreation - Owned, Buyer Approval Required, Deed Restrictions, Gated Community - Guard, Park, Playground, Pool, Sidewalks, Street Lights

ExteriorFeatures: Balcony, Lighting, Sidewalk, Sliding Doors

Utilities: Cable Available, Electricity Connected, Sewer Connected, Underground Utilities, Water Connected

Amenities: Dishwasher, Disposal, Dryer, Freezer, Ice Maker, Microwave, Range, Refrigerator, Washer

GarageYN: Yes

FireplaceYN: No

Cooling: Central Air

Security Features: Gated Community, Key Card Entry, Security Gate, Smoke Detector(s)

WindowFeatures: Blinds

PoolFeatures: Gunite, In Ground

Features: Built-in Features, Ceiling Fans(s), Crown Molding, Eat-in Kitchen, Open Floorplan, Solid Surface Counters

Building Details

ArchitecturalStyle: Florida, Traditional

Heating: Central

Roof: Other, Tile

NewConstructionYN: No

Exterior material: Block, Brick, Frame, Stucco

Parking: Assigned, Basement, Common, Covered, Ground Level, Guest, Reserved

Miscellaneous

Ownership: Condominium

Occupant Type: Vacant

Showing Requirements: 24 Hour Notice, Appointment Only, Listing Agent Must Accompany, ShowingTime



Call us now

Phone: 727-888-3292

Email: RealtorCandis@gmail.com



Charles Rutenberg Realty, Inc.
THE STANDARD OF EXCELLENCE