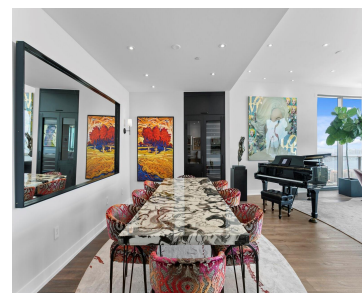
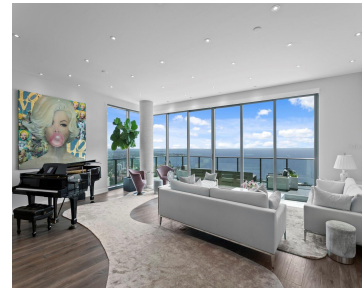
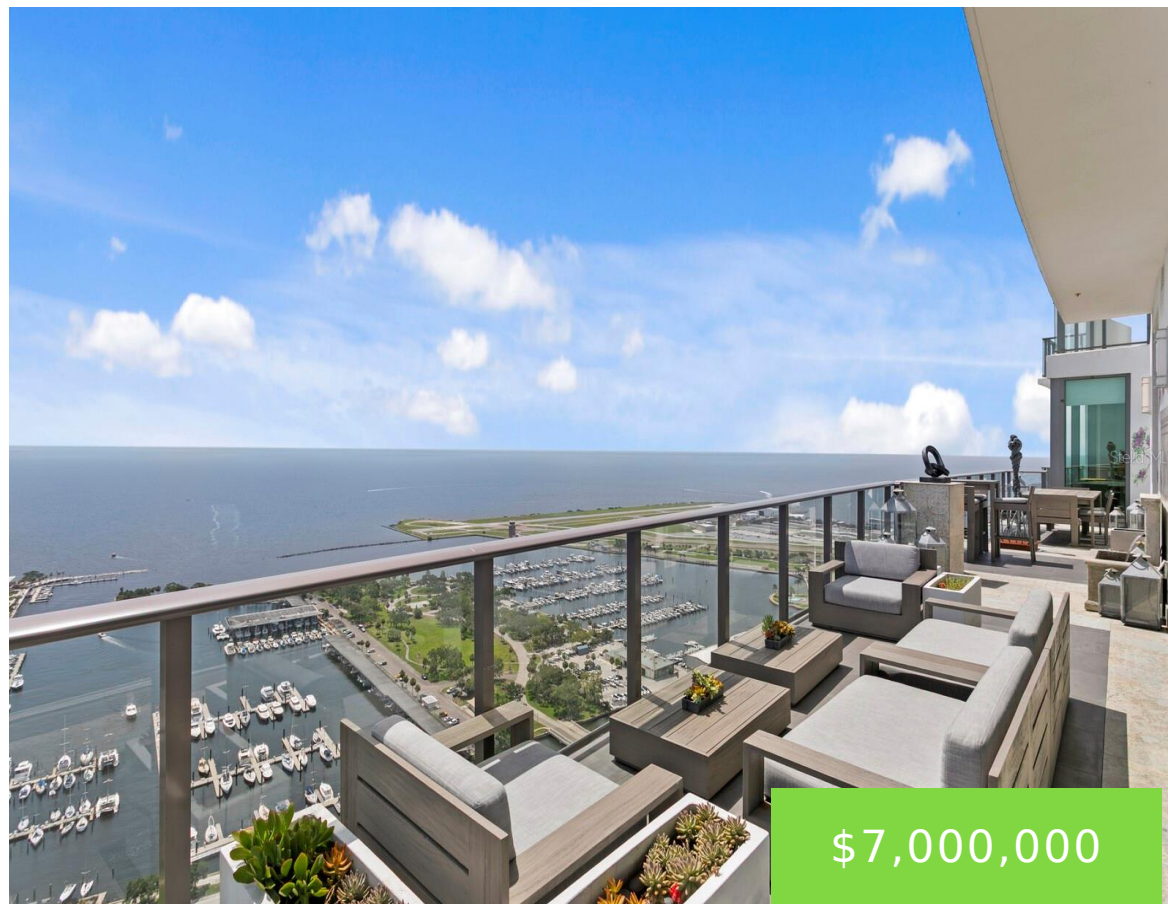


100 1ST AVENUE ST PETERSBURG FL 33701

<https://candiscarmichael.com>



UNPARALLELED PENTHOUSE SANCTUARY | THE SKY COLLECTION AT THE ONE IN DOWNTOWN ST PETE | This is not merely a residence—it's a statement. Exclusively crafted by combining two premium units during the building's construction, this extraordinary penthouse represents the pinnacle of luxury living in downtown St. Petersburg. Perched on the 39th floor, this one-of-a-kind sanctuary [...]

- 3 beds
- 5 baths
- Residential
- Condominium
- Active
- 4005 sq ft



Courtesy of

Listing Office: COMPASS FLORIDA LLC

Status: Active

Office ID: MFR260033445

MLS ID: MFRTB8397577



Call us now

Phone: 727-888-3292

Email: RealtorCandis@gmail.com



Charles Rutenberg Realty, Inc.
THE STANDARD OF EXCELLENCE

Description

Virtual Tour: <https://discover.matterport.com/space/PL1nXvr9b9Z>

Basics

Unit Number: 3905

Bathrooms Half: 2

Category: Condominium

Bedrooms: 3 beds

Half baths: 2 half baths

Area, sq ft: 4005 sq ft

Year built: 2018

View: City, Water

ListOfficeName: COMPASS FLORIDA LLC

ListAOR: mfrmls

Bathrooms Full: 3

Date added: Added 18 hours ago

Type: Residential

Bathrooms: 5 baths

Floors: 41 floors

Lot size, sq ft: 58000 sq ft

UnitNumber: 3905

SubdivisionName: ONE ST. PETERSBURG

GarageSpaces: 4

Location Details

Township: 31

Road Responsibility: Public Maintained Road

Middle Or Junior School: John Hopkins
Middle-PN

Road Surface Type: Concrete

Elementary School: North Shore Elementary-
PN

High School: St. Petersburg High-PN

Property Features



Call us now

Phone: 727-888-3292

Email: RealtorCandis@gmail.com



Charles Rutenberg Realty, Inc.
THE STANDARD OF EXCELLENCE

Interior Features: Built-in Features, Eat-in Kitchen, High Ceilings, Kitchen/Family Room Combo, Living Room/Dining Room Combo, Open Floorplan, Primary Bedroom Main Floor, Split Bedroom, Stone Counters, Walk-In Closet(s), Window Treatments

Flooring: Ceramic Tile, Marble, Tile, Wood

Patio And Porch Features: Deck

Spa YN: Yes

Parking Features: Assigned, Common, Covered, Deeded, Electric Vehicle Charging Station(s), Garage Door Opener

Attached Garage YN: Yes

Pets Allowed: Breed Restrictions, Yes

Fencing: Other

Security Features: Fire Sprinkler System, Key Card Entry, Secured Garage/Parking, Security Gate, Smoke Detector(s)

Architectural Style: Contemporary, Custom

View: City, Water

Sewer: Public Sewer

Heating: Central, Zoned

Lot Features: City Limits, Near Public Transit, Sidewalk, Street One Way

Appliances: Bar Fridge, Built-In Oven, Convection Oven, Cooktop, Dishwasher, Disposal, Dryer, Electric Water Heater, Freezer, Microwave, Range, Range Hood, Refrigerator, Washer, Water Softener, Wine Refrigerator

Laundry Features: Inside, Laundry Room

Pool Features: Gunite, In Ground

Spa Features: Heated

Garage YN: Yes

Garage Spaces: 4

Exterior Features: Balcony, Lighting, Sidewalk, Sliding Doors, Storage

Roof: Membrane

Window Features: Double Pane Windows, Low-Emissivity Windows, Shades, Storm Window(s)

Utilities: Electricity Connected, Fire Hydrant, Natural Gas Connected, Public, Sewer Connected, Underground Utilities, Water Connected

Water Source: Public

Cooling: Central Air

Furnished: Partially

Property Details

Subdivision Name: ONE ST. PETERSBURG

Levels: One

Direction Faces: East

Builder Model: Custom: 3904 & 3905 Combined

Construction Materials: Concrete, Stucco

Property Condition: Completed

Parcel Number: 19-31-17-64138-000-3905

Property Attached YN: Yes

Builder Name: Kolter

Foundation Details: Slab, Stilt/On Piling

Listing Terms: Cash, Conventional



Call us now

Phone: 727-888-3292

Email: RealtorCandis@gmail.com



Charles Rutenberg Realty, Inc.
THE STANDARD OF EXCELLENCE

Association Information

Association YN: Yes

Association Fee Includes: Guard - 24 Hour, Pool, Escrow Reserves Fund, Fidelity Bond, Insurance, Maintenance Structure, Maintenance Grounds, Maintenance, Management, Recreational Facilities, Security, Sewer, Trash, Water

Community Features: Association Recreation - Owned, Buyer Approval Required, Fitness Center, No Truck/RV/Motorcycle Parking, Pool, Street Lights

Association Fee Frequency: Monthly

Association Amenities: Elevators, Fitness Center, Lobby Key Required, Maintenance, Pool, Recreation Facilities, Security, Spa/Hot Tub, Storage, Vehicle Restrictions

Fees&Taxes

Tax Year: 2024

Tax Legal Description: ONE ST PETERSBURG CONDO UNITS 3904 & 3905

Tax Annual Amount: \$50,711

Tax Lot: 0080

Rooms



Call us now

Phone: 727-888-3292

Email: RealtorCandis@gmail.com



Charles Rutenberg Realty, Inc.
THE STANDARD OF EXCELLENCE

Room type	Dimensions	Level	Length	Width
Dining Room	10x14	First	14	10
Family Room	23x27	First	27	23
Living Room	18x26	First	26	18
Kitchen	10x19	First	19	10
Kitchen	10x26	First	26	10
Bedroom 1	24x14	First	14	24
Primary Bedroom	13x24	First	24	13
Primary Bathroom	13x24	First	24	13
Den	12x11	First	11	12
Bedroom 3	18x12	First	12	18

Amenities & Features



Call us now

Phone: 727-888-3292

Email: RealtorCandis@gmail.com



Waterfront available: No

AttachedGarageYN: Yes

PoolPrivateYN: No

Spa Features: Heated

CommunityFeatures: Association Recreation - Owned, Buyer Approval Required, Fitness Center, No Truck/RV/Motorcycle Parking, Pool, Street Lights

ExteriorFeatures: Balcony, Lighting, Sidewalk, Sliding Doors, Storage

Utilities: Electricity Connected, Fire Hydrant, Natural Gas Connected, Public, Sewer Connected, Underground Utilities, Water Connected

Amenities: Bar Fridge, Built-In Oven, Convection Oven, Cooktop, Dishwasher, Disposal, Dryer, Electric Water Heater, Freezer, Microwave, Range, Range Hood, Refrigerator, Washer, Water Softener, Wine Refrigerator

GarageYN: Yes

FireplaceYN: No

Cooling: Central Air

Security Features: Fire Sprinkler System, Key Card Entry, Secured Garage/Parking, Security Gate, Smoke Detector(s)

WindowFeatures: Double Pane Windows, Low-Emissivity Windows, Shades, Storm Window(s)

PoolFeatures: Gunite, In Ground

Features: Built-in Features, Eat-in Kitchen, High Ceilings, Kitchen/Family Room Combo, Living Room/Dining Room Combo, Open Floorplan, Primary Bedroom Main Floor, Split Bedroom, Stone Counters, Walk-In Closet(s), Window Treatments

Building Details

ArchitecturalStyle: Contemporary, Custom

NewConstructionYN: No

Heating: Central, Zoned

Exterior material: Concrete, Stucco

Roof: Membrane

Parking: Assigned, Common, Covered, Deeded, Electric Vehicle Charging Station(s), Garage Door Opener

Miscellaneous

Ownership: Condominium **Occupant Type:** Vacant

Other Structures: Storage **Showing Requirements:** Appointment Only, Call Listing Agent, Listing Agent Must Accompany, See Remarks, ShowingTime



Call us now

Phone: 727-888-3292

Email: RealtorCandis@gmail.com



Charles Rutenberg Realty, Inc.
THE STANDARD OF EXCELLENCE