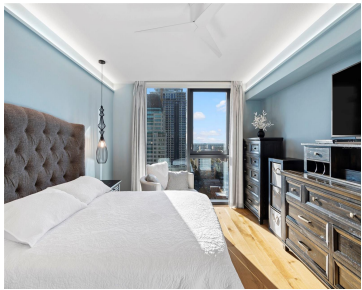


1 BEACH DRIVE ST PETERSBURG FL 33701

<https://candiscarmichael.com>



Step into luxury with this fully remodeled 2-bedroom, 2.5-bath condominium on the 24th floor of the renowned Bayfront Tower. Spanning an expansive 2,158 square feet, this NW corner unit offers unparalleled panoramic views of the St. Petersburg skyline, Tampa Bay, and beyond—encompassing the Skyway Bridge, the Gulf of America, downtown St. Petersburg, and even downtown [...]

- 2 beds
- 3 baths
- Residential
- Condominium
- Active
- 2158 sq ft



Call us now

Phone: 727-888-3292

Email: RealtorCandis@gmail.com



Courtesy of

Listing Office: COMPASS FLORIDA LLC

Status: Active

Office ID: MFR260033445

MLS ID: MFRTB8357914

Description

Virtual Tour:

https://player.vimeo.com/video/1062816911?badge=0&autoplay=0&player_id=0&app_id=58479

Basics

Unit Number: 2414

Bathrooms Half: 1

Category: Condominium

Bedrooms: 2 beds

Half baths: 1 half bath

Area, sq ft: 2158 sq ft

Year built: 1975

View: City, Water

ListOfficeName: COMPASS FLORIDA LLC

ListAOR: mfrmls

Bathrooms Full: 2

Date added: Added 1 week ago

Type: Residential

Bathrooms: 3 baths

Floors: 29 floors

Lot size, sq ft: 0 sq ft

UnitNumber: 2414

SubdivisionName: BAYFRONT TOWER CONDO

GarageSpaces: 1

Location Details

Township: 31

Elementary School: Campbell Park Elementary-PN

High School: St. Petersburg High-PN

Road Surface Type: Asphalt, Paved

Middle Or Junior School: John Hopkins Middle-PN



Call us now

Phone: 727-888-3292

Email: RealtorCandis@gmail.com



Charles Rutenberg Realty, Inc.
THE STANDARD OF EXCELLENCE

Property Features

Interior Features: Built-in Features, Ceiling Fans(s), Eat-in Kitchen, High Ceilings, Living Room/Dining Room Combo, Open Floorplan, Primary Bedroom Main Floor, Solid Surface Counters, Solid Wood Cabinets, Stone Counters, Thermostat, Tray Ceiling(s), Walk-In Closet(s), Window Treatments

Flooring: Hardwood, Tile

Patio And Porch Features: Covered, Porch

Parking Features: Assigned, Covered, Electric Vehicle Charging Station(s), Garage Door Opener, Under Building, Valet

Attached Garage YN: Yes

Pets Allowed: Number Limit

Roof: Membrane

Window Features: Impact Glass/Storm Windows, Shades, Window Treatments

View: City, Water

Sewer: Public Sewer

Heating: Central, Electric

Appliances: Bar Fridge, Built-In Oven, Convection Oven, Cooktop, Dishwasher, Disposal, Dryer, Electric Water Heater, Exhaust Fan, Ice Maker, Microwave, Range, Range Hood, Refrigerator, Washer, Water Purifier, Water Softener, Wine Refrigerator

Laundry Features: Inside

Pool Features: Gunite, Heated

Garage YN: Yes

Garage Spaces: 1

Exterior Features: Balcony, Lighting, Outdoor Grill, Outdoor Shower, Private Mailbox, Sauna, Sliding Doors, Storage

Security Features: Key Card Entry, Secured Garage / Parking, Security System, Security System Owned, Smoke Detector(s)

Utilities: Cable Connected, Electricity Connected, Sewer Connected, Water Connected

Water Source: Public

Cooling: Central Air

Property Details

Subdivision Name: BAYFRONT TOWER CONDO

Levels: One

Foundation Details: Slab

Listing Terms: Cash

Parcel Number: 19-31-17-03491-000-2414

Direction Faces: North

Construction Materials: Block, Concrete

Association Information



Call us now

Phone: 727-888-3292

Email: RealtorCandis@gmail.com



Charles Rutenberg Realty, Inc.
THE STANDARD OF EXCELLENCE

Association Fee Includes: Guard - 24 Hour, Cable TV, Common Area Taxes, Pool, Escrow Reserves Fund, Fidelity Bond, Insurance, Internet, Maintenance Structure, Maintenance Grounds, Maintenance, Management, Pest Control, Recreational Facilities, Sewer, Trash, Water

Association Amenities: Elevator(s), Fitness Center, Maintenance, Pool, Sauna, Security, Storage

Community Features: Association Recreation - Owned, Buyer Approval Required, Deed Restrictions, Fitness Center, Pool, Sidewalks

Fees&Taxes

Tax Year: 2024

Tax Annual Amount: \$14,826

Tax Legal Description: BAYFRONT TOWER CONDO APT 2414

Tax Lot: 000

Rooms

Room type	Dimensions	Level	Length	Width
Living Room	23x16	First	16	23
Dining Room	16x13	First	13	16
Kitchen	15x15	First	15	15
Primary Bedroom	17x13	First	13	17
Bedroom 2	19x13	First	13	19
Primary Bathroom	16x13	First	13	16
Bathroom 2	14x10	First	10	14



Call us now

Phone: 727-888-3292

Email: RealtorCandis@gmail.com



Charles Rutenberg Realty, Inc.
THE STANDARD OF EXCELLENCE

Amenities & Features

Waterfront available: No

AttachedGarageYN: Yes

PoolPrivateYN: No

Security Features: Key Card Entry, Secured Garage / Parking, Security System, Security System Owned, Smoke Detector(s)

WindowFeatures: Impact Glass/Storm Windows, Shades, Window Treatments

PoolFeatures: Gunite, Heated

Features: Built-in Features, Ceiling Fans(s), Eat-in Kitchen, High Ceilings, Living Room/Dining Room Combo, Open Floorplan, Primary Bedroom Main Floor, Solid Surface Counters, Solid Wood Cabinets, Stone Counters, Thermostat, Tray Ceiling(s), Walk-In Closet(s), Window Treatments

GarageYN: Yes

FireplaceYN: No

Cooling: Central Air

CommunityFeatures: Association Recreation - Owned, Buyer Approval Required, Deed Restrictions, Fitness Center, Pool, Sidewalks

ExteriorFeatures: Balcony, Lighting, Outdoor Grill, Outdoor Shower, Private Mailbox, Sauna, Sliding Doors, Storage

Utilities: Cable Connected, Electricity Connected, Sewer Connected, Water Connected

Amenities: Bar Fridge, Built-In Oven, Convection Oven, Cooktop, Dishwasher, Disposal, Dryer, Electric Water Heater, Exhaust Fan, Ice Maker, Microwave, Range, Range Hood, Refrigerator, Washer, Water Purifier, Water Softener, Wine Refrigerator

Building Details

NewConstructionYN: No

Exterior material: Block, Concrete

Parking: Assigned, Covered, Electric Vehicle Charging Station(s), Garage Door Opener, Under Building, Valet

Heating: Central, Electric

Roof: Membrane

Miscellaneous

Ownership: Condominium **Disclosures:** Lead Paint, Seller Property Disclosure

Occupant Type: Owner **Showing Requirements:** Supra Lock Box, Call Listing Agent



Call us now

Phone: 727-888-3292

Email: RealtorCandis@gmail.com



Charles Rutenberg Realty, Inc.
THE STANDARD OF EXCELLENCE